

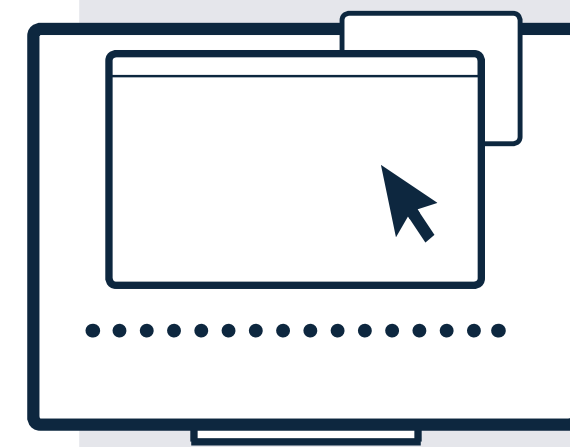
Bridge to Jobs Connects you to Careers!

The City of Los Angeles' Bridge to Jobs (BRIDGE) program helps individuals find an alternative pathway to the **Civil Service careers listed to the right**. Selected applicants will receive on-the-job training, earn a living wage, and advance to permanent employment complete with benefits.

How BRIDGE works:

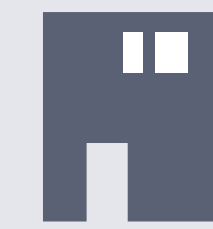
1. After being hired through BRIDGE, individuals will begin paid, on-the-job training as a **Trainee** in one of the 6 career pathways.
2. Upon successful completion of on-the-job training, participants may **advance to the Assistant Class** and begin a six-month probationary period to demonstrate that they have acquired the necessary knowledge, skills and abilities to perform the job.*
3. After successful completion of the probationary period, BRIDGE graduates **receive a permanent Civil Service appointment**.*
4. After meeting further eligibility requirements, Civil Servants are able to compete for other **promotional classes** through the civil service process. As an example, the first promotional classes are listed to the right.

*Does not apply to Inspector Trainees



Accounting Clerk

Performs clerical accounting work, maintenance of accounting records and reports, or payroll and time keeping documents; processes and monitors invoice payments, and personal services contract invoice payments; may perform cashiering duties; or may act as a lead person in the performance of such work.



Assistant Class: Accounting Clerk Assistant

Promotional Class: Accountant I & II

Communication Information Representative

Receives and handles incoming calls or emails from the public and city employees through a two-way radio or central telephone; These employees also relay information orally and in writing, enter and retrieve information from a computer, and perform clerical work.

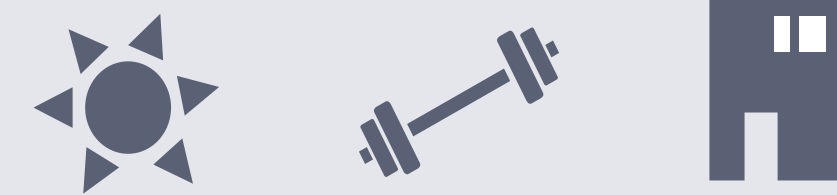


Assistant Class: Communication Information Representative Assistant
Promotional Class: Senior Communications Officer

Inspector Trainee

Assists inspectors and receives training in the inspection of buildings and structures, plumbing, heating and refrigeration, electrical installations, grading projects; or as an elevator or pressure vessel safety engineer. May perform owner and property records research, data input, report generation and field data collection. Duties may differ depending on the Department appointed to.

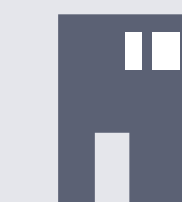
*May be required to furnish an automobile, properly insured for City service. Mileage paid according to established rates.



Assistant Class: N/A - In order to gain Civil Service Status, Inspector Trainees must pass a Civil Service exam for "Inspector" within 5 years.
Promotional Class: Inspector (Housing, Building, Construction, Plumbing, Electrical, etc.)

Community Services Representative

Promotes a City department's special programs and services in the communities it serves; provides support and assistance to guests and visitors with accessing resources; establishes and maintains professional and positive relationships with co-workers, visitors, guests, and community members; and does related work.



Assistant Class: Community Services Representative Assistant

Field Engineering Aide

Performs sub-professional land surveying work or works with engineering personnel. May be required to climb fences, work in confined spaces, work with hot asphalt, and carry equipment long distances over various types of terrain; also may be trained to operate Data Collectors, and to set up and operate GPS receivers.



Assistant Class: Field Engineering Aide Assistant
Promotional Class: Land Surveying Assistant

Electrical Craft Helper

Assists skilled journey-level craft workers engaged in one of the electrical trades by performing a variety of semiskilled or manual duties involved in the construction, installation, maintenance and/or repair of electrical systems, facilities, and equipment; and does related work.



Assistant Class: Electrical Craft Helper Assistant
Promotional Class: Electrician, Assistant Signal System Electrician, Signal System Electrician, Electric Service Representative, Electric Distribution Mechanic Trainee

LEGEND



Work Indoors



Work Outdoors



Physical Labor

Note: Some BRIDGE job classes may have additional requirements and features.



For candidates seeking initial City employment, in accordance with Los Angeles City Ordinance 187134, information regarding COVID-19 vaccination requirements as conditions of employment may be found at: https://clkrep.lacity.org/online/docs/2021/21-0921_ord_187134_8-24-21.pdf